

Airbond Dust Filter Bags are manufactured with a commitment to deliver consistency and quality assurance.

We offer a wide variety of bags types that can be designed and constructed upon request to fit the many different OEM baghouses and dust collectors for each industry. Custom designs are also available.

Since each baghouse / dust collector has its own set of system specifications and operates within its own set of system parameters, it's important to have the right fabric type and finish that is best suited to the system.

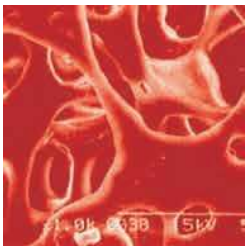


Filter Media Specifications

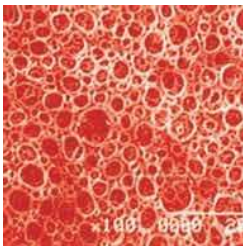
Specifications By Material

Items	Material	POLY ESTER	POLY PROPYLEN	POLY ARAMID	PPS	POLY IMIDE	GLASS	PTFE +GLASS	PTFE	PTFE+PTFE COATING
		P.E	P.P	NOMEX	RYTON	P84	FIBER GLASS	TEFAIRE	TEFLON	TEFLON
Range of Temp(°C)	Continuous Operating Temp (°C)	150	90	200	190	250	260	260	260	260
	MAX.Shot Duration Temp (°C)	170	100	250	230	280	290	280	280	280
Physical property	Weight(g/m²)	500	500	550	550	500	650	750	750	750
	Thickness(mm)	1.72	2.27	2.2	1.75	2.61	1.0	1.5	1.1	1.3
	Air Permeability	100 - 240 L / dm² / m					35 - 70 L / dm² / m			
Chemical property	ACIDS	D	A	D	B	B	B	A	A	A
	ALKALIES	E	A	B	B	D	C	A	A	A
	SOLVENTS	B	A	B	B	B	A	A	A	A
	OXIDIZING AGENTS	A	B	B	C	C	B	A	A	A
	HYDROLYSIS	E	A	C	B	B	B	A	A	A
	RELATIVE MOISTURE REGAIN	0.4	0.1	4.5	0.6	0.1	3.0	0	0	0

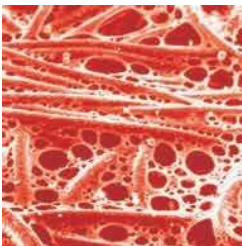
RANK A Excellent B Very Good C Good D Fair E Poor



e- PTFE Membrane



Foam Microporous

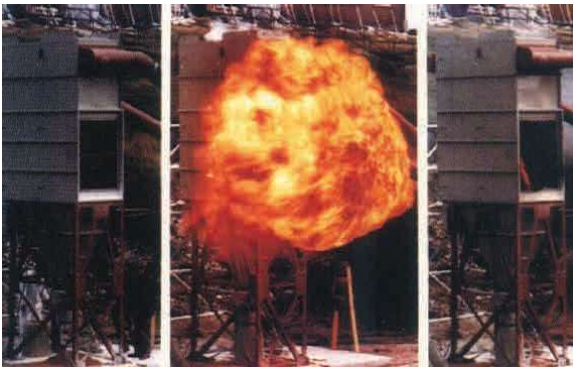


Water and Oil Repellent

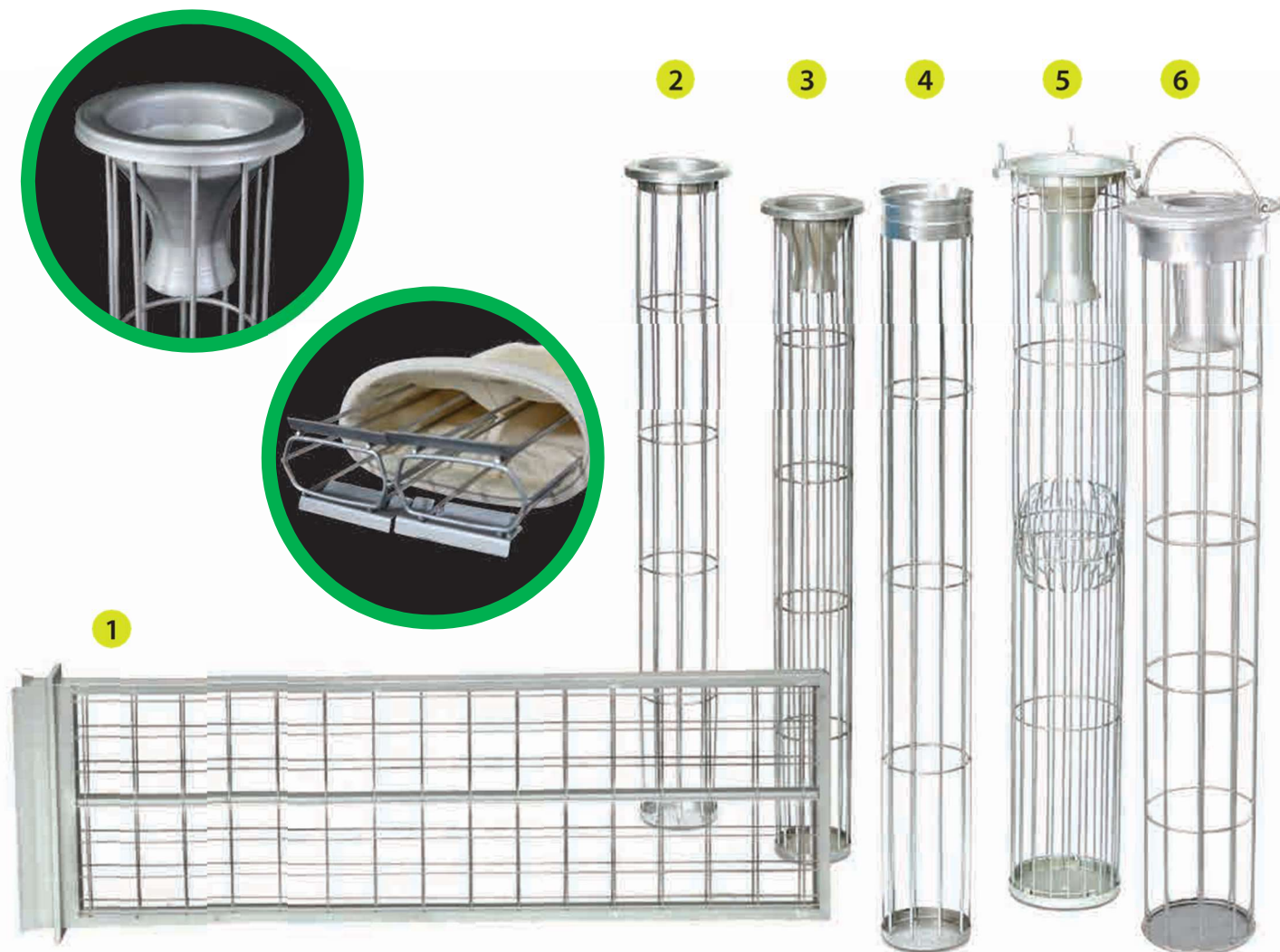
The Dangers of Static Build Up



Static electrical charges can build up on filter dust cake on filter media. These may discharge causing a spark, which can in turn be followed by an explosion



Airbond cages are standardly constructed of galvanized steel and 304 stainless steel. A properly designed cage will serve as a critical component for optimum bag performance and durability



BAG CAGE TYPE

- | | | |
|------------------------|-------------------------------------|--------------------|
| 1 ENVELOPE TYPE | 3 SNAP TYPE WITH VENTURI | 5 TWO PIECE |
| 2 SNAP TYPE | 4 GROOVE SNAP WITH CLIP TYPE | 6 BAND TYPE |

Cage Material & Configurations

When ordering or customizing cages, please provide as much of the following information as possible so we can design the desired cages:

- Size & Material
- Single piece or multiple piece cage
- Wire diameter and number of vertical rods
- Surface treatment coating/ finishes
- Platehole/ tubesheet diameter
- Special requirements

Cage Materials

- Galvanized Steel
- 304 Stainless Steel

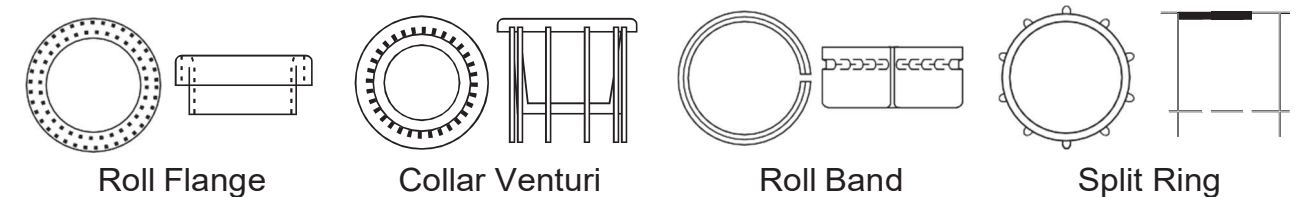
Coating/Finishes

- Galvanized Steel (Raw)
- 304 Stainless Steel (Raw)
- Basic Industrial Protective Coating

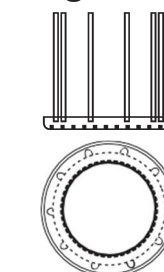
Number of Vertical Wires



Cage Tops

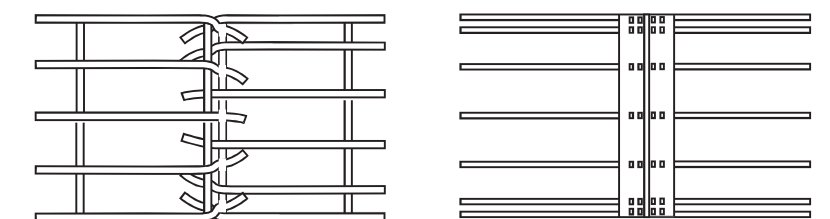


Cage Bottoms



Welded Cup

2 PC Round Cage Connections



Finger

Twist-Lock